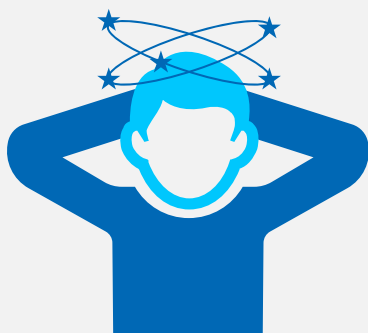
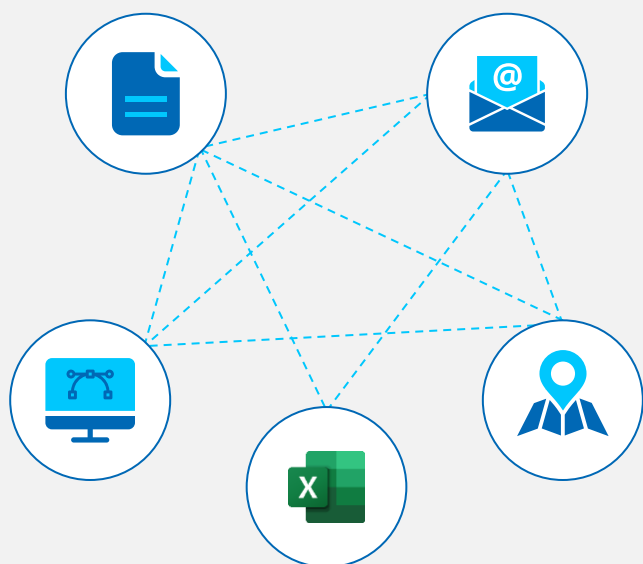


Intel and OnePlan are working together to deliver the future of venue experiences to event organizers across the world



Current event planning tools are time consuming and overwhelming

With so many moving parts, **accurate event planning is a challenge** from the budget, to staffing, to venue layout, to the venue experience and more. **Currently, disparate software programs execute event planning, easily creating confusion.** This confusion can lead to costly mistakes as event planners constantly jump between CAD (computer-aided design) software, online maps, excel, email, and group communication applications to plan a small or large event.

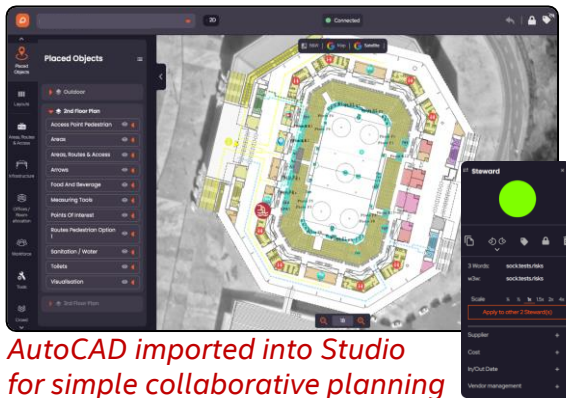
Additionally, **venue operators are increasingly focusing the future of their venue on user experiences.** With that comes complexity in planning and execution of experiences before entering inside the venue, to crowd control, to suites, and more. To deliver this future, **venue operators are looking toward digital technology to aid in providing a visual experience** prior to investing capital in large scale projects.

Intel and OnePlan are helping event and venue organizers unlock their potential

OnePlan is changing the event planning industry with its **OnePlan Studio** and **VenueTwin solutions.** OnePlan works with Intel to leverage various technologies, including Intel® Core™ and Intel® Xeon® processors, to power their high-performance software that meets the specific needs of event planners to gain efficiencies, unlock potential, and create greater experiences.

“These Olympic & Paralympic Games will be placed under the sign of innovation. The way we use technology is changing, and our partnership with OnePlan will make it easier for our teams and our entire ecosystem. We will thus be able to bequeath a new way of organizing events, centered on international collaboration and supported by technology.” Tony Estanguet, Président, Paris2024

OnePlan Studio helps venue & event organizers gain efficiencies with its array of management and design tools



AutoCAD imported into Studio for simple collaborative planning

OnePlan Studio is a collaborative, real-time SaaS platform that provides a full suite of event planning, design, and management tools. It combines the best characteristics of CAD with up-to-date satellite mapping technology (i.e. Google & Bing) in one easy-to-use solution.

OnePlan Studio is optimized for Intel silicon, such as Intel® Core™ and Intel® Xeon®, helping drive the compute power needed to process the many features of the multi-tool software and empowering event organizers with a one-stop shop event planning tool.



Maps



CAD Import



Infrastructure



Dot Planning



Traffic Management



Crowd Management



Venue Management



VenueTwin 3D

Seamless integration between OnePlan Studio & Venue Twin

OnePlan VenueTwin empowers organizers to unlock the full potential of their venue

Venue Twin is a fully interactive, pinpoint accurate 3D digital twin of any venue, hosted in the cloud for 24/7 collaborative access. It provides huge operational and commercial benefits through its seamless integration with Studio – the platform is fully interoperable.

Powered by Intel® silicon, VenueTwin creates a real-world environment for any venue; empowering sales teams to sell hospitality, sponsorship and advertising, along with being able to remotely plan for future events (staging, seating, broadcast camera placement etc.).



VenueTwin of LA Clippers new Intuit Dome

OnePlan supports ExCel London Exhibition & Convention Center to sell their space immersively



Situation: One of the worlds leading Convention Centers desired a better way to sell their multiple event spaces to potential clients across the globe.

Sales were successful but the leadership team wanted a way to set themselves above the competition and make sales cycles more efficient and shorter, especially for a new area of ExCel London which hasn't been physically constructed yet.

Solution: OnePlan worked with ExCel London to create an immersive Digital Twin of the venue which could be personalized to each prospective client. Digital & analogue signage throughout the venue can be changed at the click of a mouse to reflect any brand, logo or sign, as can different room set ups be changed as the client requests (boardroom, theatre etc).

Results: ExCel London now have a cm accurate virtual venue which they can take potential clients into 24/7 and give them a tour whilst showing them exactly how their brand and desired room set up will look in real life – in the built sections and also unbuilt expansion areas!



Intel and OnePlan can help you organize and transform your events

For more information on the relevant Intel and OnePlan products, go to...

- [Visiting ExCeL | Welcome to ExCeL London](#)
- [OnePlan website](#)
- [VenueTwin landing page](#)
- [OnePlan YouTube](#)
- [OnePlan: My Company | LinkedIn](#)
- [OnePlan \(@OnePlanEvents\) | Twitter](#)
- [OnePlan - Home | Facebook](#)
- [OnePlan \(@oneplan_events\) | Instagram](#)

Intel technologies may require enabled hardware, software or service activation.

No product or component can be absolutely secure.

Intel does not control or audit third-party data. You should consult other sources to evaluate accuracy.

Your costs and results may vary.

© Intel Corporation. Intel, the Intel logo, and other Intel marks are trademarks of Intel Corporation or its subsidiaries. Other names and brands may be claimed as the property of others

OnePlan partners with LA Clippers to create an immersive 3D digital twin of the unbuilt Intuit Dome



Situation: The LA Clippers wanted to create a digital twin of their new & unbuilt Intuit Dome, the technologically advanced, basketball-obsessed arena and entertainment venue that will deliver a uniquely intimate and intense experience when it opens for the 2024-25 season. The digital twin will have many Use Cases including commercializing branding and hospitality opportunities in immersive 3D.

Solution: OnePlan built a Venue Twin of the Intuit Dome from the architectural files alone. This Venue Twin is used within the Clippers' Experience Center in Downtown Los Angeles to enable customers to envision the arena, suites and surroundings before the Dome is physically constructed.

Results: LA Clippers have/ are using Venue Twin to sell clients different areas within the Dome, and are exploring other operational use cases as the pinpoint accurate model can also be used for Operational needs – all in advance of the Domes opening.



Intel and OnePlan can help you organize and transform your events

For more information on the relevant Intel and OnePlan products, go to...

- [LA Clippers Case Study](#)
- <https://www.nba.com/clippers/intuitdome>
- [OnePlan website](#)
- [VenueTwin landing page](#)
- [OnePlan YouTube](#)
- [OnePlan: My Company | LinkedIn](#)
- [OnePlan \(@OnePlanEvents\) | Twitter](#)
- [OnePlan - Home | Facebook](#)
- [OnePlan \(@oneplan_events\) | Instagram](#)

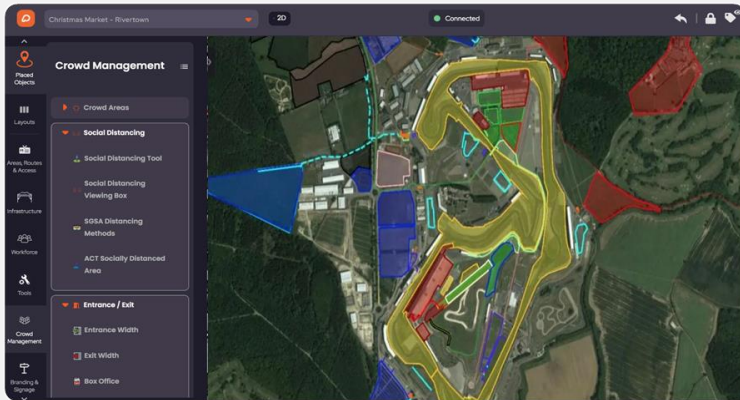
Intel technologies may require enabled hardware, software or service activation.

No product or component can be absolutely secure.

Intel does not control or audit third-party data. You should consult other sources to evaluate accuracy.

Your costs and results may vary.

© Intel Corporation. Intel, the Intel logo, and other Intel marks are trademarks of Intel Corporation or its subsidiaries. Other names and brands may be claimed as the property of others



Situation: Before using OnePlan, Silverstone used tools that many event planners have had to juggle with – AutoCAD, Google Maps, Powerpoint etc. However, these tools aren't specifically designed for event planning so they experienced commonly seen pain points.

Silverstone's Senior Event Manager says, "Our previous event planning methods required extensive training to use and the plan was only as up-to-date as the last PDF pulled from it."

Wanting to combat some of the inefficiencies of the old ways of event planning and looking for a streamlined tool for event organizers, Silverstone started using OnePlan to map, design and manage their events.

Solution: OnePlan's simple to use SaaS 2D planning platform was quickly implemented and adopted by Silverstone to collaborate with various stakeholders for their multiple events.

Results: Time saved and supplier efficiencies have led to an estimated 13x ROI on the monthly OnePlan spend. This is comprised of an estimated 5% efficiency in Supplier management of the team of around 9,000 contractors and suppliers, estimated 10% reduction in man days due to reduced physical visits and a further 5% time save with reduction in version control and related issues.

James Loveridge, Senior Events Manager at Silverstone, says they see quantifiable benefits: "OnePlan gives us efficiencies. Using it to manage our venue delivers a 10% reduction in days because of a reduced need for site visits, and a further 5% time saving now that all our venue plans are controlled this way."

Intel and OnePlan can help you organize and transform your events

For more information on the relevant Intel and OnePlan products, go to...

- [OnePlan Silverstone Case Study](#)
- [OnePlan: My Company | LinkedIn](#)
- [OnePlan - Home | Facebook](#)
- [OnePlan website](#)
- [OnePlan \(@OnePlanEvents\) | Twitter](#)
- [OnePlan \(@oneplan_events\) | Instagram](#)
- [VenueTwin landing page](#)
- [OnePlan YouTube](#)

Intel technologies may require enabled hardware, software or service activation.

No product or component can be absolutely secure.

Intel does not control or audit third-party data. You should consult other sources to evaluate accuracy.

Your costs and results may vary.

© Intel Corporation. Intel, the Intel logo, and other Intel marks are trademarks of Intel Corporation or its subsidiaries. Other names and brands may be claimed as the property of others